

## WHO WE ARE...

JOHN M. KELLY

CO-OWNER

DIRECTOR OF TECHNOLOGY

MASTER CLUB FITTER AND CRAFTSMEN



TERRY GROSCH

MASTER PGA PROFESSIONAL

4 TIME GATEWAY PGA TEACHER OF THE YEAR



MARIA PALOZOLA

TOP 50 LPGA TEACHER IN THE WORLD, 08-09

2008 LPGA MIDWEST TEACHER OF THE YEAR



GREG LOFGREN

DIRECTOR OF FITNESS



MAXIMIZE YOUR GAME

13378 MANCHESTER RD.

ST. LOUIS, MO 63131

314.965.3488

WWW.MIDWESTGOLFLAB.COM



MAXIMIZE YOUR GAME

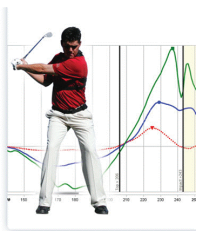
# TECHNOLOGY

## "TECHTRAIN"



# MIDWEST GOLF LAB

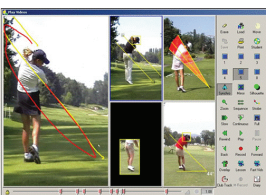
## SWING APPLICATIONS



**K-VEST** is a completely mobile, easy to use, interactive system that combines video analysis, 3-D analysis, and real-time feedback in one complete package. Unlike current video systems, **K-VEST** uses 3 wireless sensors to provide teachers with a more accurate swing analysis and students with real-time visual and auditory feedback designed to help them see, hear, and feel their instruction. **K-VEST** is currently used by a stable of successful PGA & LPGA teaching professionals and

coaches, including David Leadbetter, and Chuck Cook, among others. Additionally, some of the top NCAA Division I golf teams, including Oklahoma State, Arizona State, University of Florida, University of Illinois, University of New Mexico and more, are using **K-VEST** to improve their recruiting and training programs.

- The **K-VEST** technology is truly wireless. No wires in the way!
- The **K-VEST** displays live video and animation in the same screen from an ideal training environment.
- It is the only system that measures the full Kinetic chain: hips, shoulders, and arms.
- Software is based on anatomical data.
- Here, see and feel correct swing and posture.



**GASP** Video System. The concept of the system is to give the instructor the ability to pin point errors in student's techniques, have the ability to show and compare student's actions as well as show improvements. The overall experience of the student having instruction is improved by the equipment adding an extra element of technology where the student feels the instruction

is backed up by sound/visual evidence from the instructor. The **GASP** Advanced Coaching System is the most flexible on the market today. It is a proven fact golf students learn faster in an indoor video environment, without the stress of ball flight orientation as they train the correct swing positions.

- On screen drawing tools.
- Action replay facilities.
- Simultaneous multi camera capture.
- Improve by seeing how you are swinging instead of how you think you're swinging.
- Student Cd.

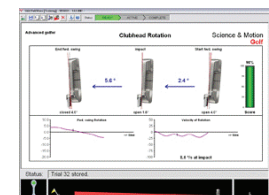
## FITTING APPLICATIONS

**TRACKMAN**, so advanced it is one of less than 5 units in the world, measures the launch parameters of every club in your bag. It measures the 3D path of the Driver and delivers the most accurate data of the Attack Angle, Club Path, Face Angle and Swing Plane. **Trackman™** is used for R&D testing by the top 30 golf equipment manufacturers in the US and Japan, who also use the system for clubfitting their staff players. **Trackman™** is used by the USGA and the R&A for golf equipment evaluation and testing. Many of the world's top tour professionals use **Trackman™** for practicing and optimizing their equipment. Further, **Trackman™** is "THE SYSTEM" unparalleled in its accuracy for Driver fitting. **Trackman™** takes Club Fitting to a new level by adding exact 3D path of the club head, accurate launch and landing data, as well as shot optimization to the fitting session.



- Get the most advanced fitting to improve your distance and control.
- Specially designed Club Fitting procedure enables an efficient fitting system.
- Precise graphical charts and numerical data.
- Launch angle, Ball Speed, Launch and Axis Spin, Carry and Total Distance.

**SAM PUTTLAB** is a putting analysis, fitting and training system based on the most accurate ultrasound measurements. It analyzes the 28 most important parameters of your putting stroke and displays the results in easy to understand graphic reports. Discover your individual strengths and weaknesses for better and more efficient training. Within seconds the system gives you an individual feedback on your putting strokes. The analysis reveals even the smallest details of your movements and allows you to develop improvements and training strategies. **SAM PuttLab** utilizes ultrasound sensory analysis and therefore is far more precise than any other similar system on the market.



- Easy to use technology, precise putter fitting.
- Automatic measurements and analysis.
- Clear graphical display and setting.
- Learn better putting technique and consistency.